

Australian  
Select  
Timbers®



**REGENCY**®  
HARDWOOD

Creating a home,  
made easy.



stop dreaming and start creating at  
[www.asttimbers.com.au](http://www.asttimbers.com.au)

---

Imperial Collection  
(UV Lacquer Matte)

Hinterland Collection  
(Reclaimed Rustic)

Infinite Collection  
(Hard Wax Oil)

Herringbone Collection  
(Engineered)

---

---

# Contents

<b>01</b>	About the Regency Range	3
<b>02</b>	Features	4
<b>03</b>	Regency Imperial	7
<b>03</b>	Regency Hinterland	9
<b>04</b>	Regency Infinite	11
<b>05</b>	Regency Herringbone	13
<b>06</b>	Care & Maintenance	15



Blackbutt (Regency Infinite)  
1860mm x 189mm x 14mm

---

# Regency Hardwood® Range

At Australian Select Timbers, we pride ourselves in offering the best quality flooring solutions.

Our passion for quality ensures that only the finest timber and coatings are selected, allowing us to provide an innovative, stylish and elegant flooring solution every time.

The Regency Hardwood® Range showcases our premium engineered Australian hardwood, bringing to you the option of 3 colours - Spotted Gum, Blackbutt and Smoked Spotted Gum.

Each specie in our Regency Hardwood® Range has it's own individual patterns formed by natural knots, grains and gum veins, creating a stunning work of art when pieced together in any area.

---

## Features

Our Regency Hardwood® range is constructed with 8 layers of hardwood plywood core, using multiple thin hardwood sheets that are arranged, glued and pressed with the grain running at right angles to the adjacent sheet.

The Tongue and Groove joining system is one of the oldest methods used. It has proven stability, and is one of the best traditional joining methods around.

By using the tongue and groove system with a hardwood ply core, this mechanism provides optimum stability as our floors are less likely to cup, twist and squeak with environmental changes and ensures for a smooth installation process.

Like all Aussie timbers, Regency Hardwood® is designed to be floated which allows natural movement in the timber that occurs over time. Floating will allow your floor to age gracefully and at the same time move with environmental changes.

Using glue between the joints acts as a sealant so that in an event where minor spillage occurs, water ingress is prevented.

Australian Select Timbers takes pride in providing the best quality for our customers, and with a Lifetime Structural Warranty, 20 Year Residential Wear Warranty with a 5 Year Commercial Warranty on the Regency Hardwood® Range. You can rest easy that your engineered flooring will leave you nothing short of being completely satisfied, allowing you to enjoy the natural beauty of the timber throughout the years.

(Please refer to our full warranty terms and conditions).





At Australian Select Timbers,  
our dedication to providing our  
customers with the highest quality  
products ensures customer  
satisfaction and a flooring solution  
that will withstand the  
test of time.



---

Regency

# Imperial

Blackbutt (Regency Imperial)  
1860mm x 125mm x 14mm

---

# Regency Imperial (UV Lacquer Matte Collection)

Our matte lacquer provides a smooth, clear finish allowing the timber to really show it's beauty.

Using a superior German KLUMPP coating, allows for a high quality finish, whilst still retaining the natural beauty of the timber throughout the years.

Available in both Spotted Gum and Blackbutt, we have created the option for individuality and provided the choice of either the classic 125mm board or a contemporary 189mm wide board.



**Blackbutt**  
1860mm x 125mm x 14mm

- UV Lacquer
- Smooth Finish
- Super Matte Finish
- Tongue & Groove
- Nested boards in packs



**Spotted Gum**  
1860mm x 125mm x 14mm

- UV Lacquer
- Smooth Finish
- Super Matte Finish
- Tongue & Groove
- Nested boards in packs



**Blackbutt**  
1860mm x 189mm x 14mm

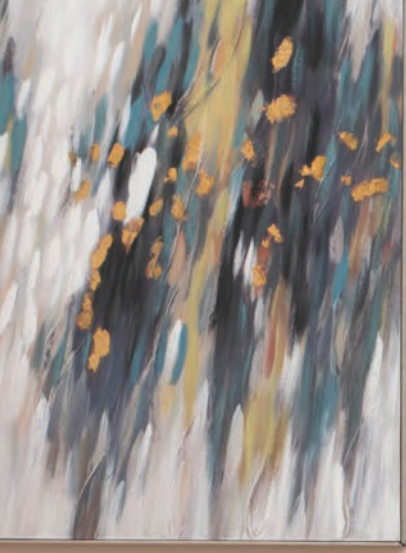
- UV Lacquer
- Smooth Finish
- Super Matte Finish
- Tongue & Groove
- Nested boards in packs



**Spotted Gum**  
1860mm x 189mm x 14mm

- UV Lacquer
- Smooth Finish
- Super Matte Finish
- Tongue & Groove
- Nested boards in packs

NOTE: The swatches shown are for display purposes. For correct colours please refer to our actual samples or display floors in store. Lengths and widths may vary from batch to batch, due to our unique Australian timber material.



---

Introducing:

# Hinterland

Spotted Gum (Regency Hinterland)  
1860mm x 189mm x 14mm



# Hinterland (Reclaimed Rustic Collection)

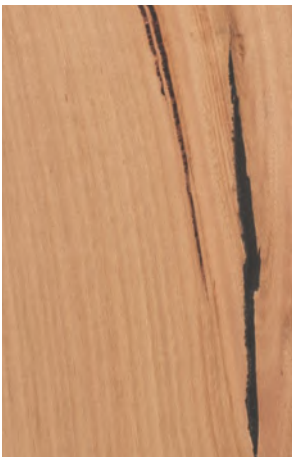
Wanting a floor with a point of difference that fits close to nature?

Australian Select Timbers Regency Hinterland collection is a design that embraces the rugged and natural beauty of nature, with its organic warmth of dark gum veins, knots and textures replicating the essence of a tree.

Just like our Regency Infinite range, Regency Hinterland is delicately finished with a superior German made

wax oil which preserves the rustic texture of the timber whilst adding a touch of contemporary elegance. The oil penetrates deep into each board embracing the visual imperfections created by nature.

See the unique appearance and feel the textured contours on each and every board. Available in both Spotted Gum and Blackbutt in a 189mm wide board, its sure to please the most discerning timber enthusiast.



## Blackbutt

1860mm x 189mm x 14mm

- Hard Wax Oil
- Wire Brushed
- Super Matte Finish
- Nested boards in packs



## Spotted Gum

1860mm x 189mm x 14mm

- Hard Wax Oil
- Wire Brushed
- Super Matte Finish
- Nested boards in packs



## “ Kai and Sandra

We fell in love with the Regency Hinterland collection. We wanted something that gave our home a native Australian feel.

The Hinterland range stood out to us as it not only had an Australian look, but the texture, feel and strong character helped us make our house a home.

”

NOTE: The swatches shown are for display purposes. For correct colours please refer to our actual samples or display floors in store. Lengths and widths may vary from batch to batch, due to our unique Australian timber material.



---

Regency

# Infinite

Blackbutt (Regency Infinite)  
1860mm x 189mm x 14mm

---

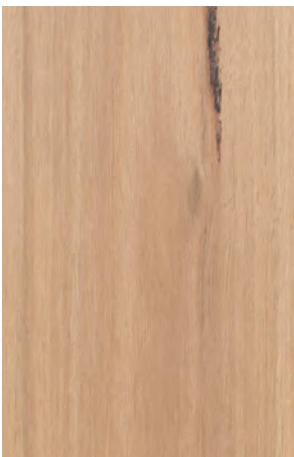
# Regency Infinite (Hard Wax Oil Collection)

With today's ever evolving trends, Australian Select Timbers has created a stunning wax oil finish 189mm wide board, showcasing natural beauty whilst still having a protective layer at the surface.

A delicate technique using a wire brush is used to apply the wax oil to each board surface, so that when it is absorbed, the wax oil enhances the timber's natural colour, grain, texture and beauty.

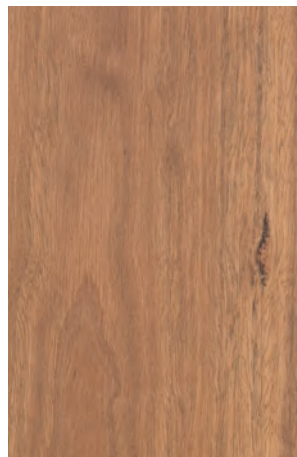
Using premium products, each board is hand coated with OSMO, a superior German wax oil, followed by a natural air-dry process that ensures the boards display a durable satin finish, promising a contemporary and stylish feel in any room.

While a variance in each board depicts the natural grooves and grains of the timber, when pieced together, our wax oil boards create a finish like no other.



**Blackbutt**  
1860mm x 189mm x 14mm

- Hard Wax Oil
- Wire Brushed
- Super Matte Finish
- Tongue & Groove
- Nested boards in packs



**Spotted Gum**  
1860mm x 189mm x 14mm

- Hard Wax Oil
- Wire Brushed
- Super Matte Finish
- Tongue & Groove
- Nested boards in packs



**Smoked Spotted Gum**  
1860mm x 189mm x 14mm

- Hard Wax Oil
- Wire Brushed
- Super Matte Finish
- Tongue & Groove
- Nested boards in packs

NOTE: The swatches shown are for display purposes. For correct colours please refer to our actual samples or display floors in store. Lengths and widths may vary from batch to batch, due to our unique Australian timber material.



---

Introducing:

# Regency Herringbone

Blackbutt (Regency Herringbone)  
600mm x 120mm x 14.5mm

---

# Regency Herringbone (Engineered Herringbone)

Enhance your space of beauty and warmth, with our stunning Regency Herringbone collection; selectively crafted using premium Australian timbers including Spotted Gum & Blackbutt.

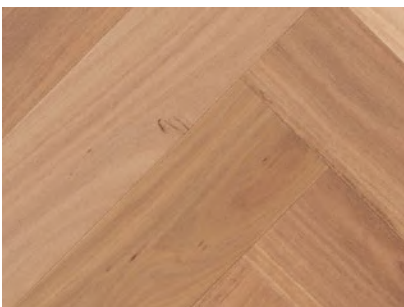
The herringbone pattern is an elegant and timeless option that fits most styles of home, complementing both classic and contemporary interiors, while making a feature of the natural wood grain and beauty contained in Spotted Gum and Blackbutt.

Herringbone is a stunning way to arrange your timber flooring and is installed using smaller pieces

of timber, arranged to create a 'basket weave' pattern. Incorporating traditional French pattern design with an Australian twist.

Our engineered hardwood flooring is designed and prefinished specifically for Australian conditions, using only FSC certificated resources. Just like our Regency Imperial range, Regency Herringbone is delicately finished using the same technique using a superior German Klumpp coating.

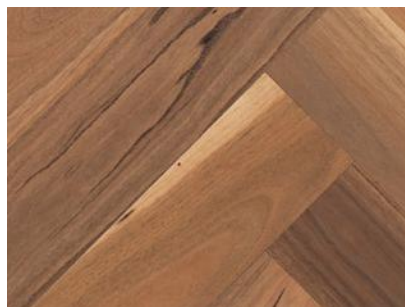
Whether you choose to implement it throughout your house or in a selected room, Regency Herringbone will create a focal point and sense of luxury to any space it is featured in.



## Blackbutt

600mm x 120mm x 14.5mm

- UV lacquer
- Matte finish
- No nested boards in pack
- Left & right tongue
- Direct stick installation method




## Spotted Gum

600mm x 120mm x 14.5mm

- UV lacquer
- Matte finish
- No nested boards in pack
- Left & right tongue
- Direct stick installation method



NOTE: The swatches shown are for display purposes. For correct colours please refer to our actual samples or display floors in store. Lengths and widths may vary from batch to batch, due to our unique Australian timber material.



At Australian Select Timbers  
we are dedicated to give you the utmost  
in quality and perfection.

We continually strive to better  
our products and perfect  
our craftsmanship.

---

# Care & Maintenance

Australian Select Timbers® brings you stylish, sustainable, sophisticated and simply beautiful floors. It's highly recommended to take care of your floor, to preserve the magnificent finish and quality presence. By following a few simple care and maintenance guidelines your floor will continue to be a thing of beauty for years to come.

## Preventative Maintenance

- Installing good quality mats inside and outside of external doors to trap grit and remove moisture from shoes is a sensible precaution and will reduce the possibility of scratches.
- In high traffic areas or areas where spillage may occur the use of mats is recommended to give added protection.
- All furniture should have felt pads fitted to the base of legs or on other areas in contact with the floor to avoid scratches. On heavy furniture felt backed castors can be used if required.
- Avoid using wheeled chairs i.e. office furniture or ensure that a large good quality office mat is used to prevent indentations in the timber.

- Rubber based items e.g. the backing for matting, castors under furniture and rubber tipped furniture feet should not be in direct contact with the floor.
- Keep pet's nails trimmed to protect the floor from scratches.
- All timber reacts when exposed to direct sunlight and this may cause colour changes or fading. Curtains, blinds or UV resistant films on windows should be considered to reduce the exposure to direct sunlight and protect the flooring. Furniture and rugs should be moved occasionally so that the effect of sunlight on the floor is uniform.
- Any materials spilt on the floor should be wiped up immediately.
- Maintaining the temperature and humidity within a reasonably consistent range will keep the floor stable.

## Cleaning

- Dry cleaning of the floor should be carried out regularly to remove loose dirt, grit and dust. Use a *SelectCare+* Dusting pad or soft broom. If vacuum cleaning, the cleaning head must have a soft brush so as to not damage the floor.
- Use a *SelectCare+* Spray Mop with *SelectCare+* Hard Floor Cleaner to clean the floor surface when required; dry clean the floor first. Do not 'wet' mop the floor anytime as excessive amounts of water may cause damage.

## Avoid the following

- Indentation from stilettos or spiked heeled shoes.
- Pulling or pushing furniture or other objects across the floor.
- Avoid using a steam mop, abrasive cleaning materials or harsh detergents / household cleaners on the floor. Using these cleaning methods / materials will harm the surface of the floor and may cause physical damage to the boards.
- Do not use solvents of any kind to clean the floor. Methylated Spirits, Turpentine or similar materials will damage the floor surface.

## Important Note:

All Regency Hardwood® products with OSMO hard wax oil finish need to be re-oiled and maintained every 12 months for residential and 6 months for commercial to insure the warranty will not be compromised. We recommend the use of OSMO Wash and Care (daily cleaning) and Interior Spray Cleaner (spot cleaning) for our Regency Hardwood wax oil products.



**REGENCY®**  
HARDWOOD

Australian  
Select  
Timbers®

[www.asttimbers.com.au](http://www.asttimbers.com.au)

