



## UNDERSTANDING THE DIFFERENT TYPES OF TIMBER FLOORING: YOUR ULTIMATE GUIDE



### POPULAR HARDWOOD TIMBER SPECIES

01



#### BLACKBUTT

This durable and strong Australian hardwood ranges in colour from blonde and pale brown to golden yellows. This pale look is one of the two most popular Australian Species timbers on the market.

02



#### IRONBARK

Renowned for its coarse texture and grain, rich colours give this timber a classic feel. Ranging from Chocolates and Reds depending on the variety. This hardwood has excellent strength and durability.

03



#### JARRAH

A versatile and characteristic hardwood. Known for its textures, grains and rich reds, making it ideal for traditional federation style design. This Western Australian Classic is sought all over the world.

04



#### OAK

Usually sourced from Europe and America, oak has been a classic flooring choice for some time. Oak makes a great Blank Canvas, and is stained to a multitude of different colours.

05



#### SPOTTED GUM

Due to its unique variety in colours and grain patterns, spotted gum is a very popular timber for interior design projects. Alongside Blackbutt, Spotted Gum is the other most popular of the Australian Species.

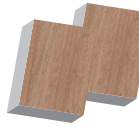
06



#### BLUE GUM

Blue gum is a popular straight-grained timber, known for its unique blue tinge to the bark. It provides good durability, excellent colour and depth.

07



#### TASMANIAN OAK

Tasmanian Oak is neither a Species of timber nor an Oak. It is made up of three similar Eucalypt species that are mixed. It starts life pinkish-blond in colour, yellowing with age. It has a unique straight grain look when compare to other Australian timber species.

08

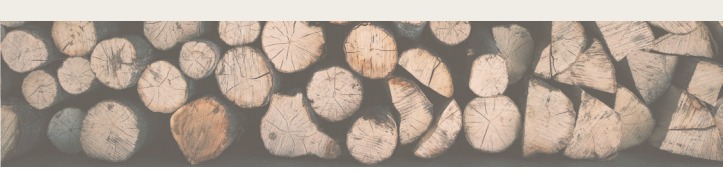


#### BRUSH BOX

Coming from the edges of the rainforest in New South Wales to Queensland, Brush Box appears to be a grey like pink through to a red like brown colour. With the grain interlocking, Brushbox timber has a fine and even texture making it a popular choice with its streamlined appearance.

### ECO - FRIENDLY

Look for products certified with the FSC or another eco-label.



### HOW IS TIMBER FLOORING PRICED?

Varies from  
brand to brand

The thickness of the  
timber

The 'Grading' of the  
timber

### TYPES OF TIMBER FLOORING

#### Engineered Timber Flooring vs Solid Timber Flooring

##### Engineered Timber Flooring

Engineered Timber Flooring ranges from 12mm to 21mm in total thickness.

The top layer is a veneer of real timber, with the Core and Backing layers varying depending on the type of Engineered construction being used.

##### Advantages:

- \* More affordable
- \* Can be Floated for an easier installation. Easier to install
- \* More dimensionally stable
- \* Premium look
- \* Prefinished products means no residual lacquer smell.
- \* Lower maintenance

##### Disadvantages:

- \* If not cared for properly, can have a shorter lifespan compared to solid timber
- \* If using Floating Installation, Can sound more hollow than solid timber, and not feel solid underfoot.

##### Solid Timber Flooring

Solid Timber Flooring ranged from 10mm to 21mm in thickness.

Products Up to 18mm in thickness can only be used as an overlay on top of an existing sub-floor.

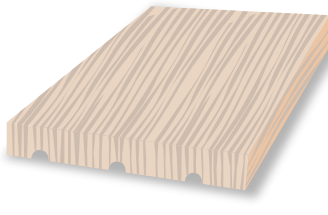
Products of 19mm and above can be used as a structural floor.

##### Advantages:

- \* Premium and authentic look and feel
- \* Durable and resistant
- \* They can last a lifetime
- \* Greater range of timber species available
- \* Potentially Limitless Finishing Options available

##### Disadvantages:

- \* More expensive in terms of both product and installation
- \* More unstable and sensitive to humidity Environmental factors.



### CHOOSING A TIMBER FLOORING

There is a range of factors that could influence your choice when looking at a timber flooring solution. Here are a few other things that should be taken into consideration:

- 1. Extreme Weathers and Stability:**  
The core layer of Engineered Timber restricts the natural expansion and contraction of the wood on top. This will reduce the creaking and buckling of the floors during climatic variations.
- 2. Maintenance:**  
Engineered timber floors come pre-finished, so their protective coatings have been thoroughly applied for you at the factory. This means the initial coating can last longer.
- 3. Installation:**  
Solid Timber needs to be installed and finished by a professional on-site. This means a more complex, expensive and time-consuming installation in comparison to Engineered Timber.
- 4. Lifespan:**  
Solid timber floors have greater durability and longevity than engineered timber floors. Solid timber flooring can be sanded and refinished numerous times. Engineered flooring can only be sanded a limited number of times depending on the thickness of its top layer.



WHEN IT COMES TO FLOORING, YOU NEED TO SPEAK TO THE EXPERTS.

HERE AT ONLINE FLOORING STORE, AS YOU CAN GUESS, FLOORING IS OUR PASSION. NO MATTER WHAT QUESTIONS YOU HAVE, OR THE PROJECT YOU'RE STARTING, WE HAVE THE ANSWERS FOR YOU. WE'D LOVE TO SPEAK TO YOU ABOUT YOUR NEW FLOORING ADVENTURE!

[WWW.ONLINEFLOORINGSTORE.COM.AU](http://WWW.ONLINEFLOORINGSTORE.COM.AU)

